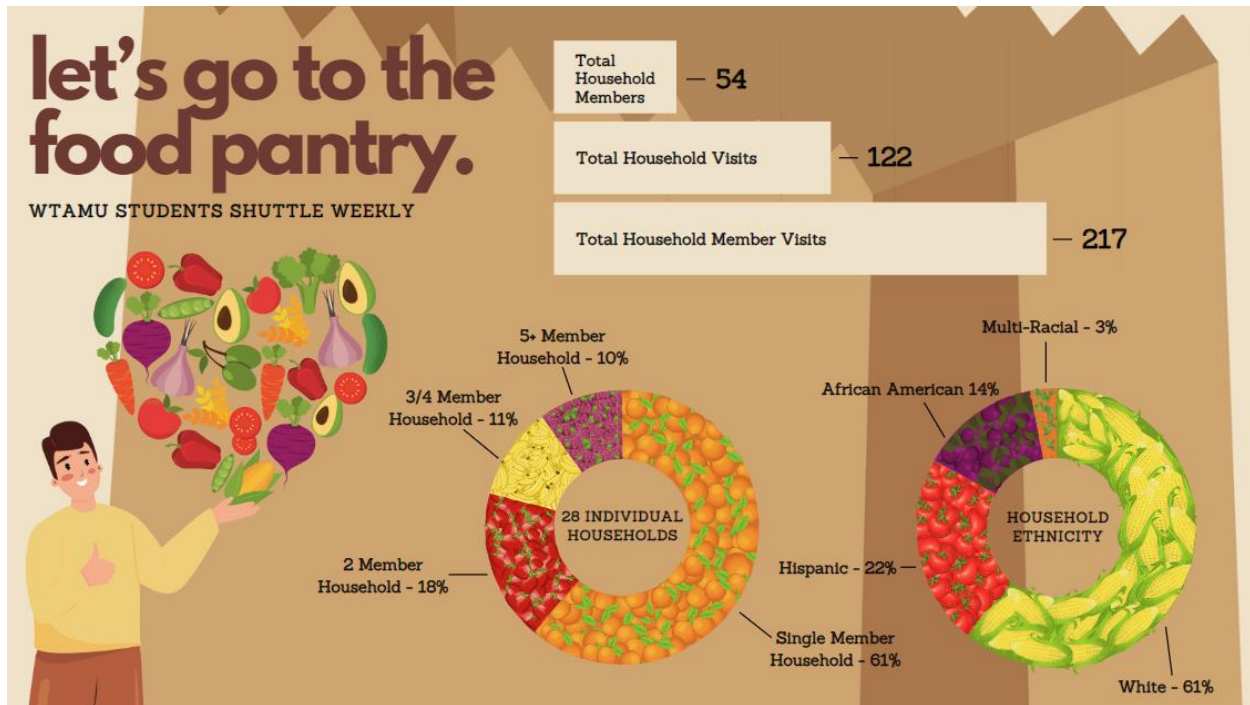


## Data Bite # 3 – The Market on Tierra Blanca Food Pantry



### The Market on Tierra Blanca Food Pantry

Food insecurity is something that WT is making strong efforts to help our students with. The Market on Tierra Blanca Food Pantry is just one of several food pantry options available to WT students. It is open through both long (Fall and Summer) and short (Summer) semesters to serve students. Students sign up and fill out an online client application to receive the services. Application can be found at: [sthelensoutreach.org](http://sthelensoutreach.org)

Here is some key information for the WT student population that was served from 1/1/24 to 5/4/24.

#### Individual Households Served -28

- Total Household Members - 54
- Total Household Visits -122
- Total Household Member Visits - 217

# in Household	% Served
Single	61%
2 members	18%
3 to 4 members	11%
5 or more members	10%

Ethnicity	% Served
White	61%
Hispanic	22%
African American	14%
Multi-Racial	3%

WTAMU students who are facing food insecurity can access the food pantry at St. Helen's Outreach. For more information on applications and donation opportunities, visit <https://sainthelensoutreach.org/>

Store Hours: Tuesdays 3 pm - 7 pm and Fridays 9 am - 12 pm